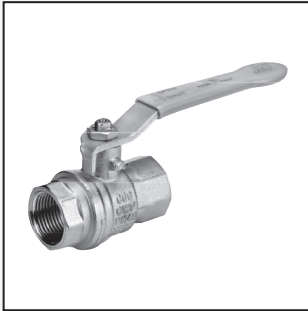



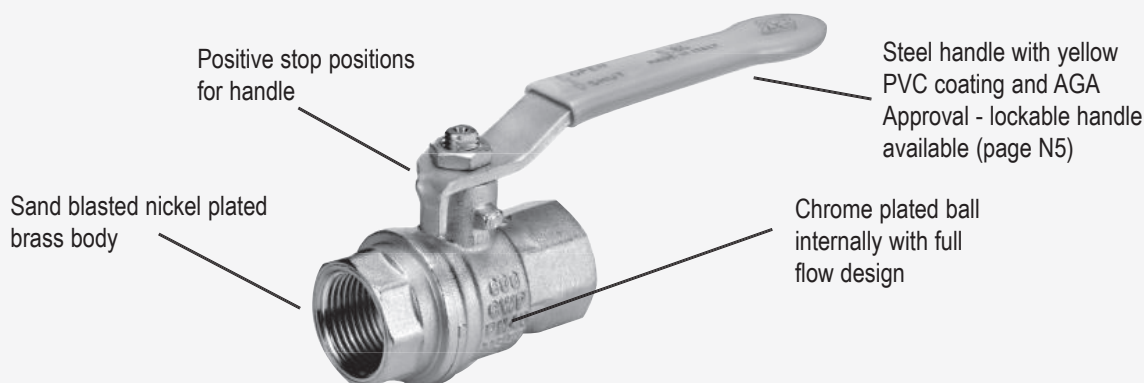


| | | |
|--|----------|---|
| <p>Low Pressure 2-Way Ball Valve</p> | <p>2</p> |  |
| <p>Low Pressure 3-Way Ball Valve</p> | <p>3</p> |  |
| <p>Mini Ball Valve</p> | <p>4</p> |  |
| <p>Locking and Twin Handles</p> | <p>5</p> |  |

LPBV-2W

2-WAY FULL BORE LOW PRESSURE BALL VALVE

AGA APPROVED



Description:

- Australian Gas Association (AGA) approved ball valve
- Cap sealed with high quality industrial adhesive
- Full port to DIN 3357 for maximum flow
- Handle stops on body to avoid stresses at the stem
- Handle clearly shows ball position
- EN 10226 BSPP female x female threads
- Dual sealing system allows valve to be operated in either direction making installation easier

Materials and Specifications:

- Nickel plated and hot forged / sand blasted brass body
- Brass according to EN 12165 and EN 12164 (formerly DIN 17660 and UNI 5705-65) specifications
- Pure PTFE self-lubricating seats
- Geomet® carbon steel handle with thick PVC dip coating
- Blowout-proof nickel plated brass stem
- FPM O-rings at the stem for maximum safety
- Silicone-free lubricant on all seals

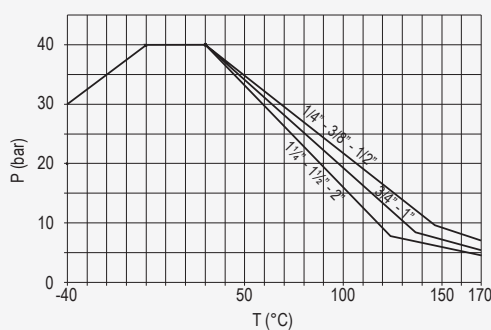
Features & Limitations:

- 40 bar (Kg/cm²) up to 2" non-shock cold working pressure
- Warning: freezing of the fluid in the installation may severely damage the valve
- Temp. Range -40°C to +170°C with standard seals (Refer pressure-temp graph)
- For use with dangerous fluids temperature rating is -20°C to +60°C and pressure rating is 5 bar

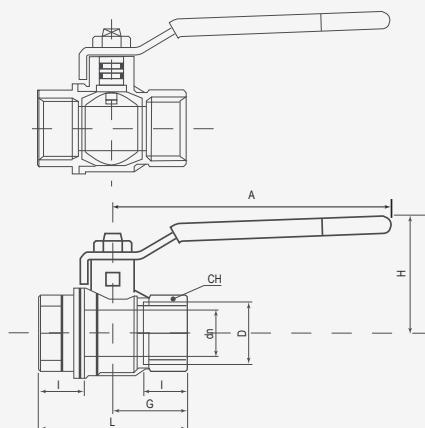
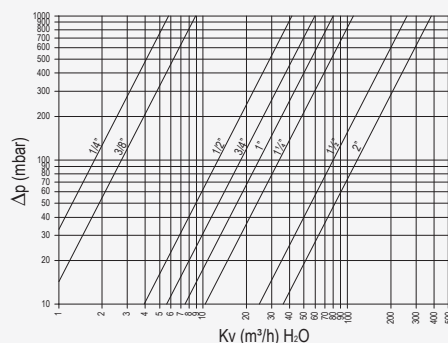
Common Uses:

- Water, oil, gas

Pressure - Temperature Graph



Pressure Drop Graph

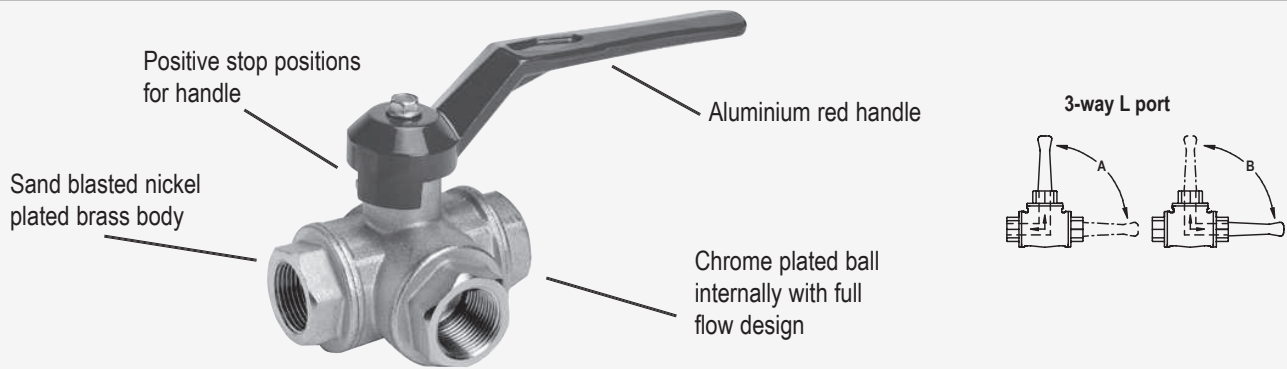


| Product Code | Nominal Bore | | | W.P. * | Dimensions (mm) | | | | | |
|--------------|--------------|----------|----|--------|-----------------|-----|------|-----|----|------|
| | Dash | D (inch) | DN | | I | L | G | A | H | CH |
| LPBV-2W-006 | 4 | 1/4" | 8 | 40 | 12 | 45 | 22.2 | 82 | 38 | 20 |
| LPBV-2W-010 | 6 | 3/8" | 10 | 40 | 12 | 45 | 22.5 | 82 | 38 | 20 |
| LPBV-2W-013 | 8 | 1/2" | 15 | 40 | 15.5 | 59 | 29.5 | 100 | 43 | 25 |
| LPBV-2W-020 | 12 | 3/4" | 20 | 40 | 17 | 64 | 32 | 120 | 50 | 31 |
| LPBV-2W-025 | 16 | 1" | 25 | 40 | 21 | 81 | 40.5 | 120 | 54 | 40 |
| LPBV-2W-032 | 20 | 1 1/4" | 32 | 40 | 23 | 93 | 46.5 | 158 | 73 | 49 |
| LPBV-2W-038 | 24 | 1 1/2" | 38 | 40 | 23 | 102 | 51 | 158 | 79 | 54 |
| LPBV-2W-051 | 32 | 2" | 50 | 40 | 26.5 | 121 | 60.5 | 158 | 86 | 68.5 |

* Working Pressure only 5 bar for dangerous fluids

LPBV-3W

3-WAY FULL BORE LOW PRESSURE BALL VALVE L-PORT



Description:

- Full port to DIN 3357 for maximum flow
- Handle stops on body to avoid stresses at the stem
- Handle clearly shows ball position
- ISO 228 BSPP female x female threads
- Four seats design limits mixing of the various fluids in the system
- No metal-to-metal moving parts

Materials and Specifications:

- Nickel plated and hot forged / sand blasted brass body and caps
- Copper alloy brass according to EN 12165 and EN 12164 specifications
- Chrome plated brass ball for longer life
- Pure PTFE self-lubricating seats
- UNI 8858 cycle and torque tests performed
- Two NBR O-rings at the stem for maximum safety
- Silicone-free lubricant on all seals

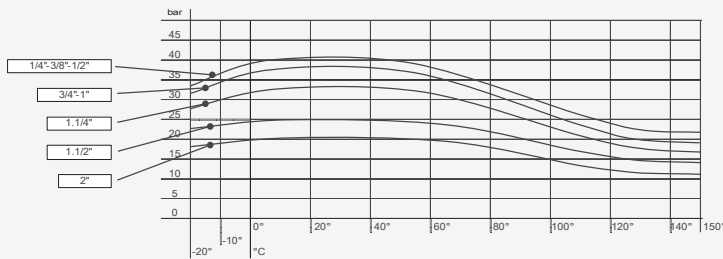
Features & Limitations:

- See Table for non-shock cold working pressure
- Extra port for lowest pressure drop
- Warning: freezing of the fluid in the installation may severely damage the valve
- Temp. Range -10°C to +120°C with standard seals (refer Pressure-Temp graph)
- Not to be used with dangerous gases in sizes larger than 25mm
- Not to be used with non-dangerous gases in sizes larger than 40mm.

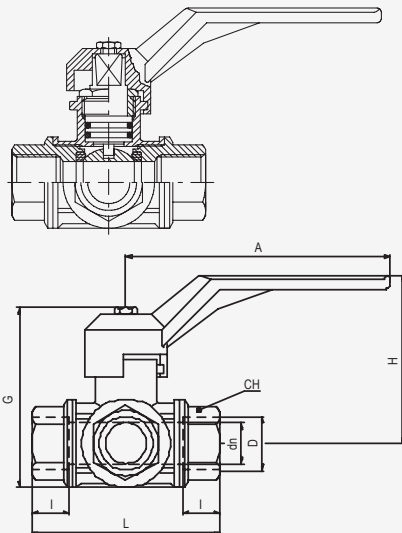
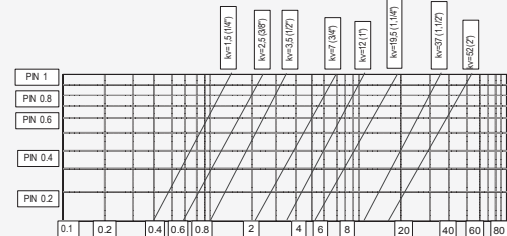
Common Uses:

- Water, oil, gas

Pressure - Temperature Graph



Pressure Drop Graph



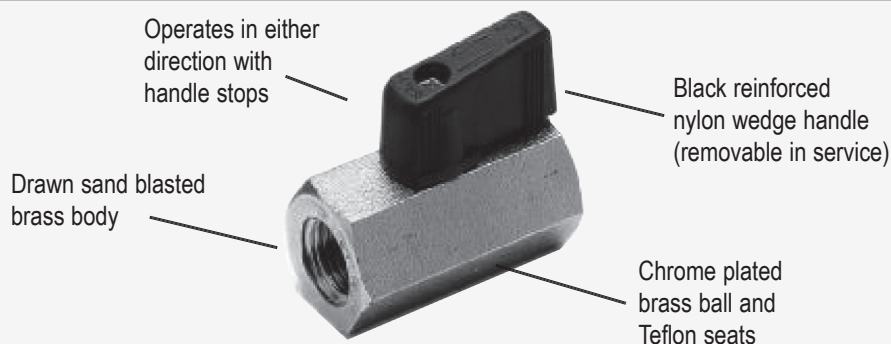
| Product Code | Nominal Bore | | | W.P. * | Dimensions (mm) | | | | | |
|---------------|--------------|----------|----|-----------|-----------------|-----|-----|-----|-----|----|
| | Dash | D (inch) | DN | | I | L | G | A | H | CH |
| LPBV-3W-006-L | 04 | 1/4" | 8 | See Graph | 19 | 77 | 75 | 125 | 65 | 22 |
| LPBV-3W-010-L | 06 | 3/8" | 10 | | 19 | 77 | 75 | 125 | 65 | 22 |
| LPBV-3W-013-L | 08 | 1/2" | 12 | | 19 | 77 | 75 | 125 | 65 | 27 |
| LPBV-3W-020-L | 12 | 3/4" | 20 | | 23 | 92 | 91 | 145 | 83 | 34 |
| LPBV-3W-025-L | 16 | 1" | 25 | | 25 | 104 | 105 | 170 | 96 | 41 |
| LPBV-3W-032-L | 20 | 1 1/4" | 32 | | 27 | 118 | 115 | 170 | 102 | 50 |
| LPBV-3W-038-L | 24 | 1 1/2" | 38 | | 31 | 138 | 128 | 170 | 109 | 57 |
| LPBV-3W-051-L | 32 | 2" | 50 | | 36 | 162 | 165 | 260 | 139 | 70 |

* Working Pressure only 5 bar for dangerous fluids

LPMV

2-WAY MINI BALL VALVE

FEMALE PORTS OR MALE / FEMALE PORTS



Description:

- Handle clearly shows ball position
- ISO 228 BSPP threads
- Female x Female & Male x Female ports
- Extremely compact design
- No metal-to-metal moving parts
- Dual sealing system allows valve to be operated in either direction for installation flexibility
- Seal tested for maximum safety
- No maintenance ever required

Materials and Specifications:

- Drawn sand blasted brass body
- Finest brass according to EN 12164 specifications
- Chrome plated brass ball for longer life
- Pure PTFE self-lubricating seats with flexible lip design
- Blowout proof brass stem
- FPM O-ring at the stem
- Black reinforced nylon wedge handle
- Silicon free lubricant

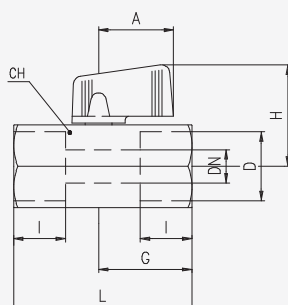
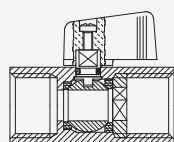
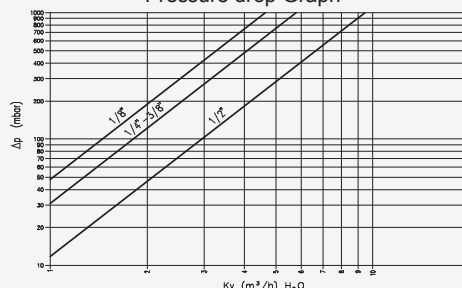
Features & Limitations:

- 30 bar non-shock cold working pressure
- Warning: freezing of the fluid in the installation may severely damage the valve
- Temp. Range -20°C to +90°C (refer to pressure - temp graph)

Pressure - Temperature Graph



Pressure drop Graph

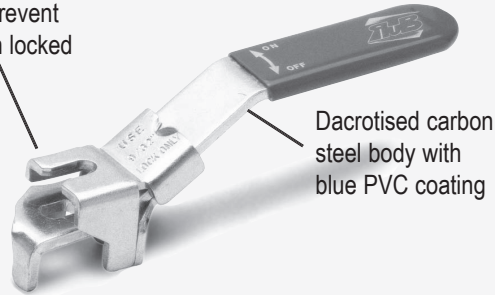


| Product Code | Nominal Bore | | | Ports | Dimensions (mm) | | | | | |
|--------------|--------------|----------|----|-------|-----------------|------|----|------|----|----|
| | Dash | D (inch) | DN | | I | L | G | A | H | CH |
| LPMV-FF-003 | 02 | 1/8" | 6 | F-F | 10 | 41.5 | 22 | 22.5 | 31 | 21 |
| LPMV-FF-006 | 04 | 1/4" | 8 | | 11 | 41.5 | 22 | 22.5 | 31 | 21 |
| LPMV-FF-010 | 06 | 3/8" | 10 | | 11 | 41.5 | 22 | 22.5 | 31 | 21 |
| LPMV-FF-013 | 08 | 1/2" | 12 | | 13 | 49 | 26 | 22.5 | 33 | 25 |
| LPMV-MF-003 | 02 | 1/8" | 6 | M-F | 10 | 41.5 | 22 | 22.5 | 31 | 21 |
| LPMV-MF-006 | 04 | 1/4" | 8 | | 11 | 41.5 | 22 | 22.5 | 31 | 21 |
| LPMV-MF-010 | 06 | 3/8" | 10 | | 11 | 41.5 | 22 | 22.5 | 31 | 21 |
| LPMV-MF-013 | 08 | 1/2" | 12 | | 13 | 49 | 26 | 22.5 | 33 | 25 |
| LPMV-MF-020 | 12 | 3/4" | 20 | | 14 | 51 | 27 | 22 | 32 | 30 |

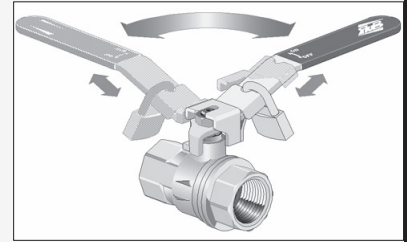
LPLH

LOCKABLE HANDLE FOR LOW PRESSURE BALL VALVE

Plate head covers the fixing nut to prevent removal when locked



Dacrotised carbon steel body with blue PVC coating



Lockable open or closed

Description:

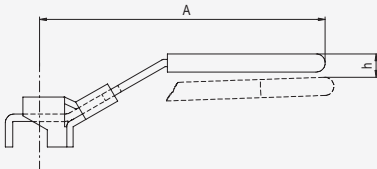
- Handle that can be retrofitted to 2 way ball valves
- Suits sizes from 1/4" to 2" diameter
- Allows either locking open or closed

Materials and Specifications:

- Dacrotised carbon steel
- Blue PVC coating

Features & Limitations:

- Requires a padlock size with 9/32" diameter shackle (7.14 mm)

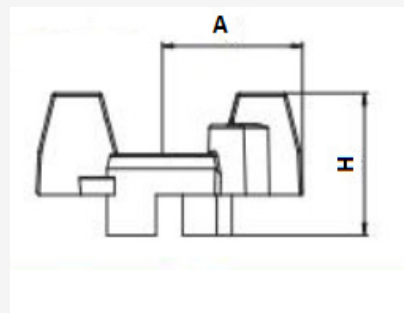


Dimension A shows handle length from the centre of the stem
Dimension H is the height above the standard handle position when assembled on the valves

| Product Code | Suits Valves | Dimensions (mm) | |
|--------------|---|-----------------|-----|
| | | A | H |
| LPLH-006-013 | LPBV-2W-006 LPBV-2W-010 LPBV-2W-013 | 96 | 8.5 |
| LPLH-020-025 | LPBV-2W-020 LPBV-2W-025 | 117 | 9.5 |
| LPLH-032-051 | LPBV-2W-032 LPBV-2W-038 LPBV-2W-051 | 156.5 | 4 |

LPTH

TWIN (BUTTERFLY) HANDLE FOR LOW PRESSURE BALL VALVE



Description:

- Twin handle that can be retrofitted to 2 way ball valves
- Suits sizes from 1/4" to 1" diameter

Materials and Specifications:

- Yellow coated Aluminium

| Product Code | Suits Valves | Dimensions (mm) | |
|--------------|---|-----------------|----|
| | | A | H |
| LPTH-006-013 | LPBV-2W-006 LPBV-2W-010 LPBV-2W-013 | 25 | 25 |
| LPTH-020-025 | LPBV-2W-020 LPBV-2W-025 | 30 | 28 |

This Page is Intentionally Blank